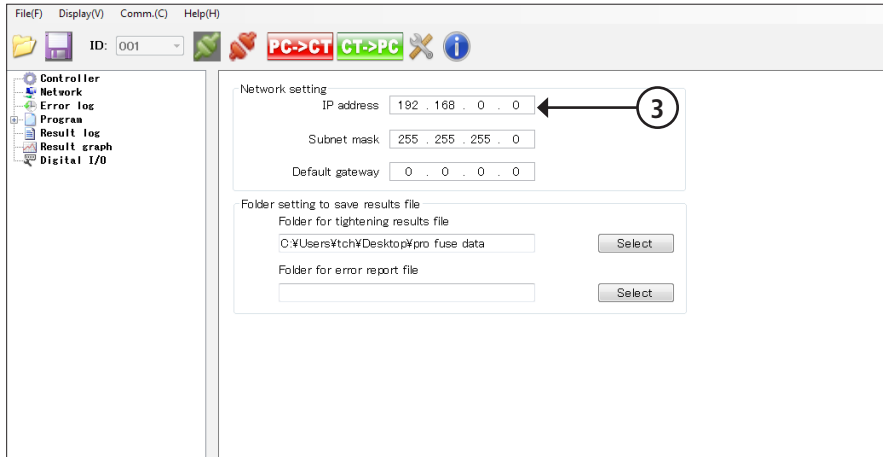
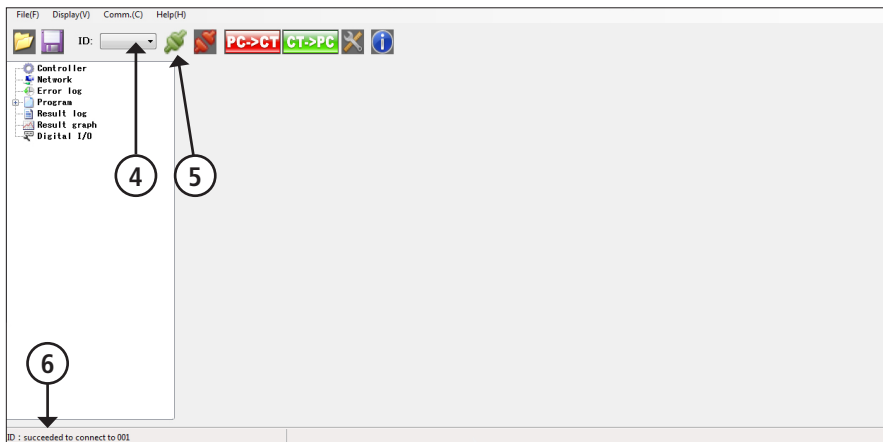


Connect Laptop to Controller

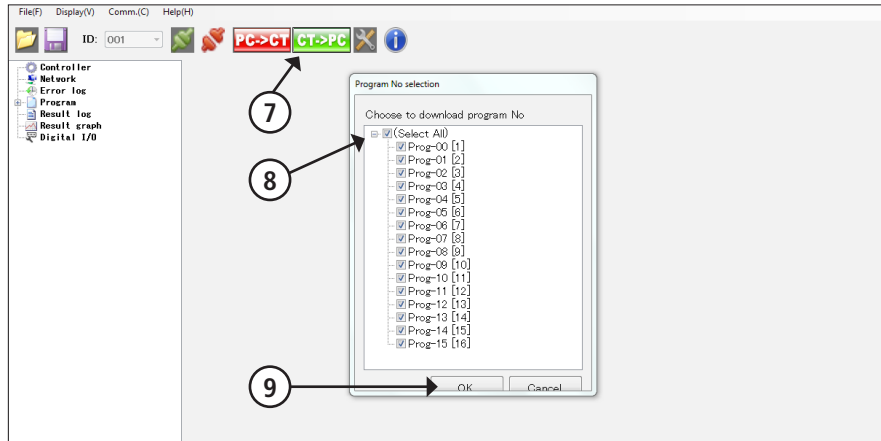


1. Set up LAN
2. Controller IP
3. Computer IP should be 192.168.0.X
 - X ≠ 0; Use 4-9.

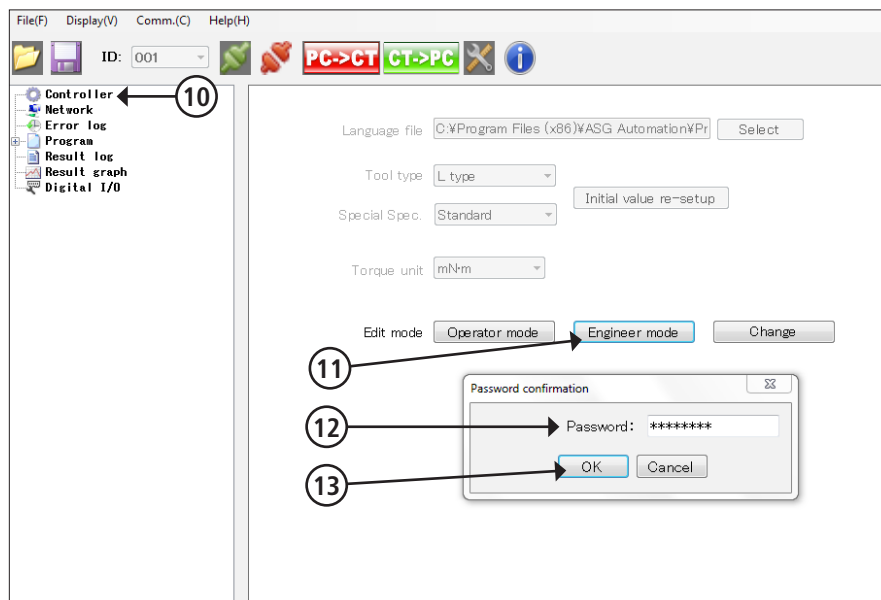
Connect Laptop/Software to Controller



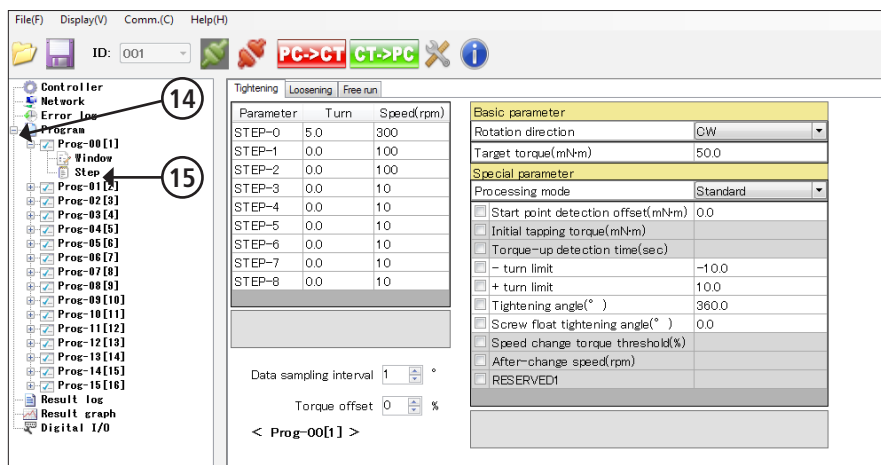
4. Select 001
5. Click on green connect icon
6. Verify Connection



7. Click CT -> PC to download programs from controller – even if it is a new controller
8. Select All
9. Select OK



10. Click Controller
11. Click Engineer Mode
12. Enter Password. The password is *password*.
13. Click OK.



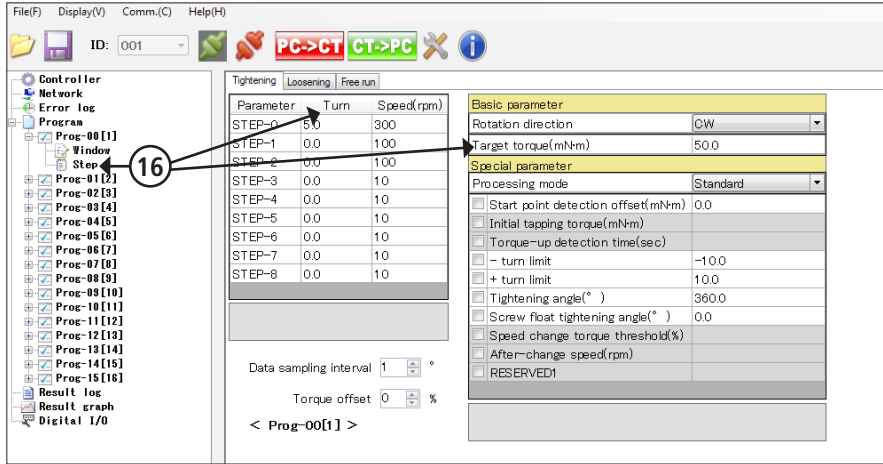
14. Expand Programs
15. Click Step

ASG, Division of Jergens, Inc.

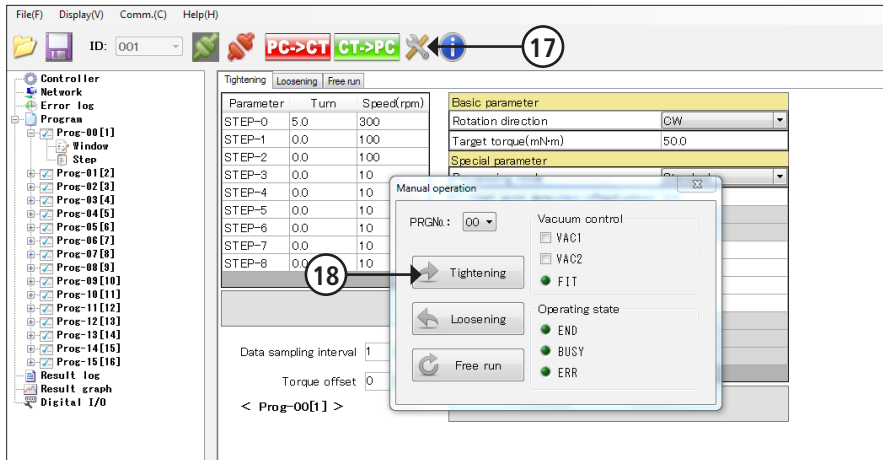
15700 S. Waterloo Road | Cleveland, OH 44110-3898

Phone: (888) 486-6163 | Fax: (216) 481-4519

Email: asginfo@asg-jergens.com | Web: www.asg-jergens.com



16. Set turns, speed, and target torque from Program/Step



17. Click on Wrench

18. Demo tightening